

LEXUS & TOYOTA: START/STOP



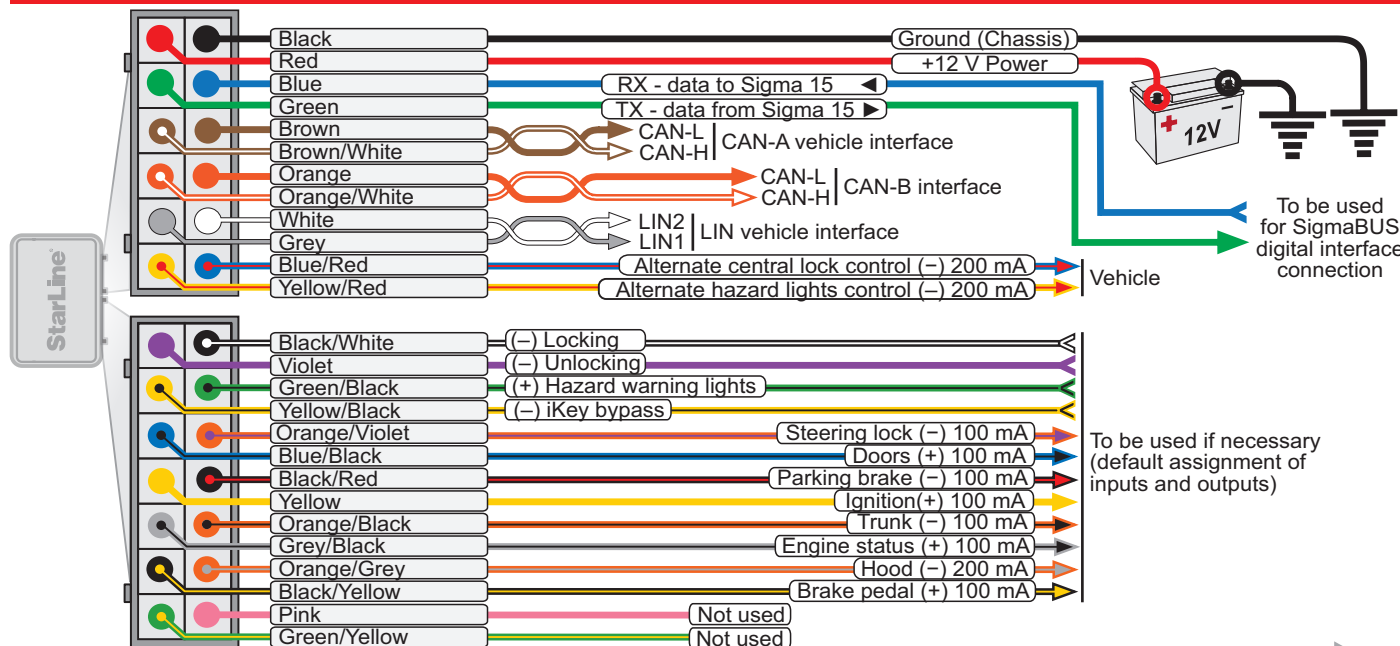
KEYLESS START

VEHICLE	YEARS	CAR #	CONNECTION	VEHICLE	YEARS	CAR #	CONNECTION
LEXUS				TOYOTA			
CT 200h	2011-2019	3548	12	Alphard	2012-...	5215	3
ES	2018-...	3525	1	Alphard	2008-2011	5713	17
ES Hybrid	2018-...	3525	5	Auris	2012-2019	5241	10
ES	2015-2018	3541	10	C-HR	2017-...	5761	1
ES 250	2012-2015	3535	10	C-HR Hybrid	2017-...	5751	5
ES 300h	2012-2015	3518	10	Camry XV70	2018-...	5733	1
ES 350	2006-2012	3513	14	Camry XV70 Hybrid	2018-...	5733	5
GS / GS Hybrid	2012-2018	3516	10	Camry XV50	2012-2017	5271	10
GX	2009-2019	3528	12	Camry XV40	2007-2011	5727	14
IS	2013-...	3523	3	Corolla	2019-...	5759	2
IS Hybrid	08.2015-...	3523	3	Corolla Hybrid	2019-...	5759	6
IS Hybrid	2013-07.2015	3523	7	Corolla	2013-2018	5275	10
LC	2017-...	----	4	Corolla	2006-2012	5223	15
LC Hybrid	2017-...	----	8	Fortuner	2015-...	5726	9
LS	2017-...	3521	1	Highlander	2014-2019	5224	3
LS Hybrid	2017-...	3521	5	Highlander	2008-2013	5244	14
LS 600h	2009-2016	3517	13	Hilux	2015-...	5252	9
LX	2016-...	3514	3	Land Cruiser 200	2016-...	5251	3
LX 570	2008-2015	3547	13	Land Cruiser 200	2008-2015	5211	13
NX / NX Hybrid	2014-...	3536	3	Land Cruiser Prado	2018-...	5725	3
RC / RC Hybrid	2014-...	----	3	Land Cruiser Prado	2009-2017	5232	12
RX	2016-...	3534	1	Prius	2016-...	5285	5
RX Hybrid	2016-...	3534	5	RAV4	2019-...	5762	1
RX / RX Hybrid	2009-2015	3522	12	RAV4 Hybrid	2019-...	5763	5
UX	2019-...	3527	1	RAV4	2013-2018	5272	10
UX Hybrid	2019-...	3533	5	RAV4 Hybrid	2015-2018	5272	11
				RAV4	2006-2012	5221	15
				Venza	2012-2016	5222	16



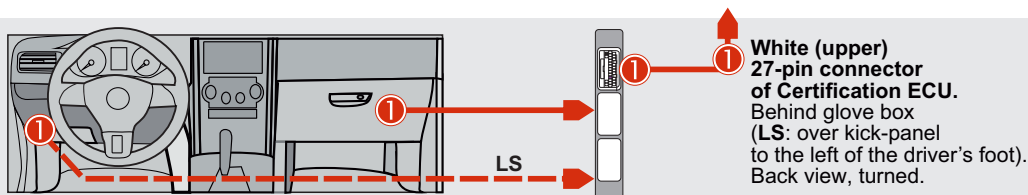
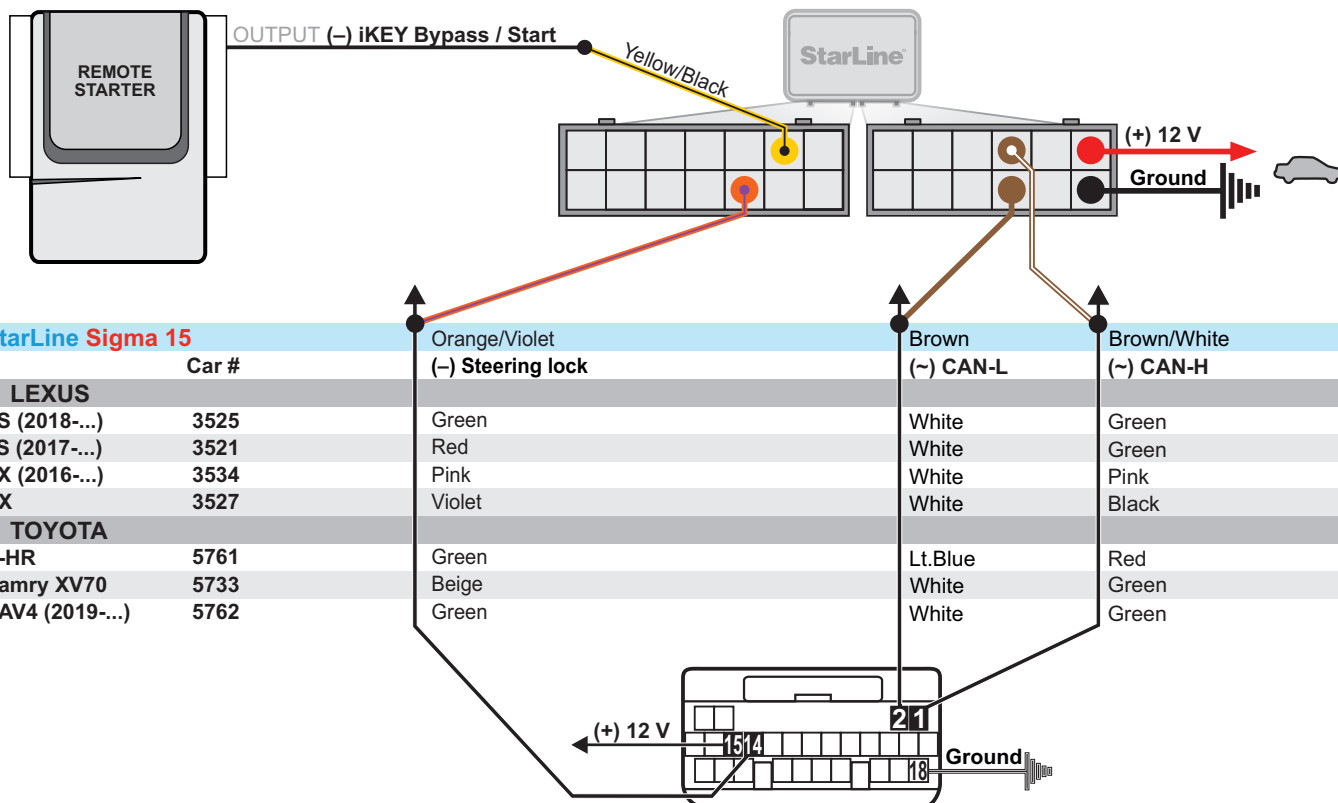
Please refer can.starline.ru web-site for additional information and newest firmware.

SIGMA 15: DEFAULT SETTINGS

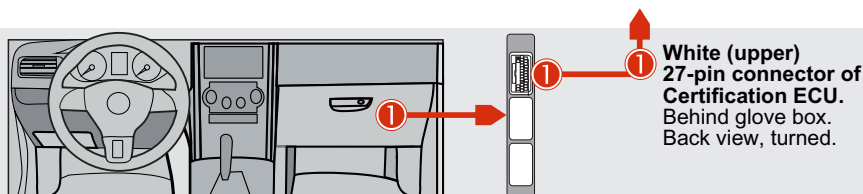
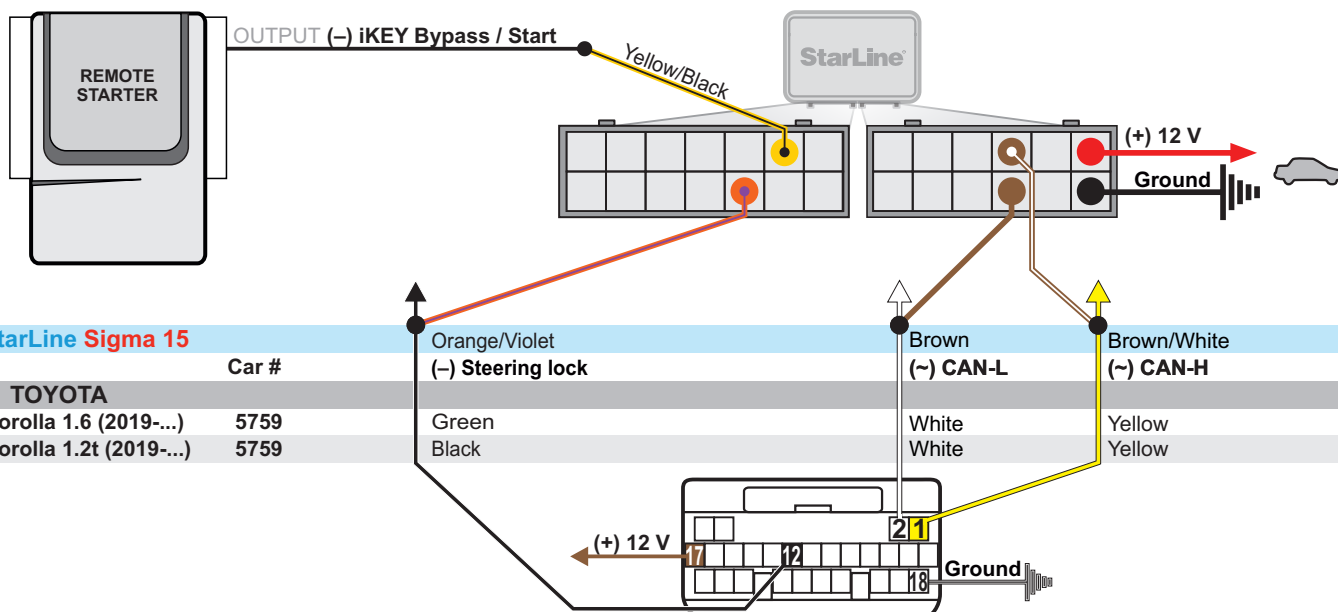


iKey bypass learning procedure: go to page 11

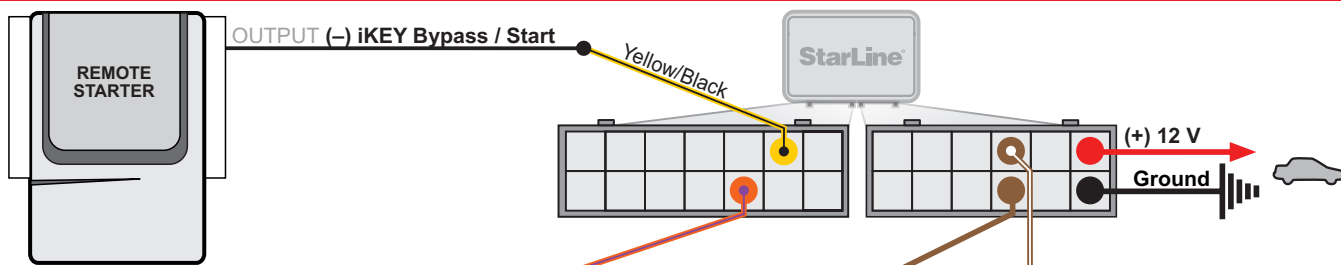
CONNECTION # 1



CONNECTION # 2

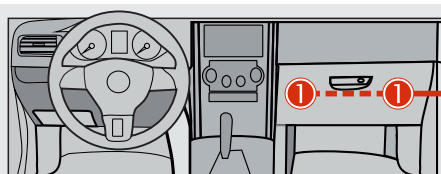
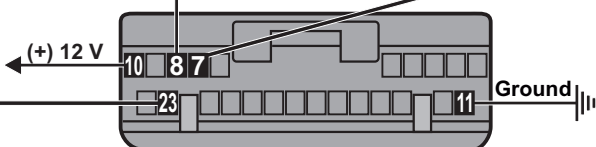


CONNECTION # 3



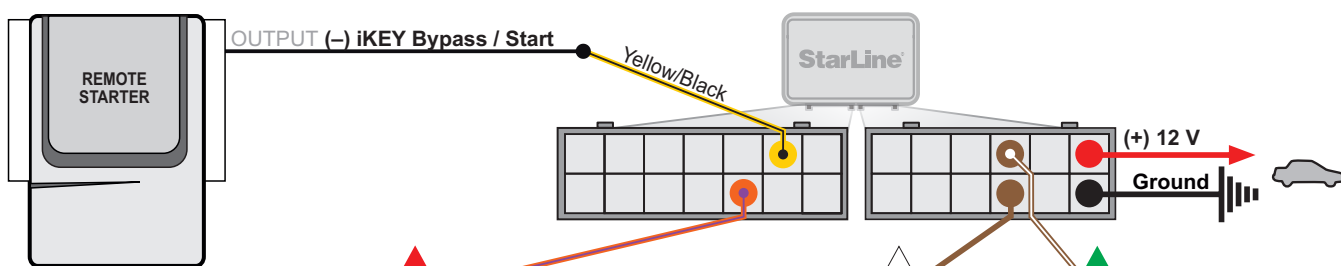
StarLine Sigma 15

	Car #	Orange/Violet (-) Steering lock	Brown (-) CAN-L	Brown/White (-) CAN-H
LEXUS				
IS (2013-...)	3523	Red	Black	White
IS Hybrid (08.2015-...)	3523	Red	Black	White
LX (2016-...)	3514	Red	White	Black
NX / NX Hybrid	3536	Grey	White	Red
RC / RC Hybrid	----	Red	Black	White
TOYOTA				
Alphard (2012-...)	5215	Green	White	Green
Highlander (2014-2019)	5224	Lt.Green	White	Green
LC 200 (2016-...)	5251	Red	White	Black
LC Prado (2018-...)	5725	Lt.Blue	White	Pink



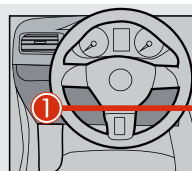
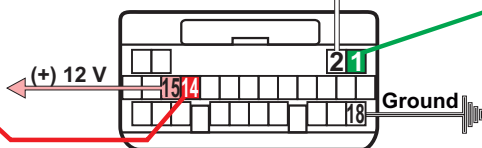
Black (upper) 24-pin connector of Certification ECU.
Behind glove box.
Back view, turned.

CONNECTION # 4



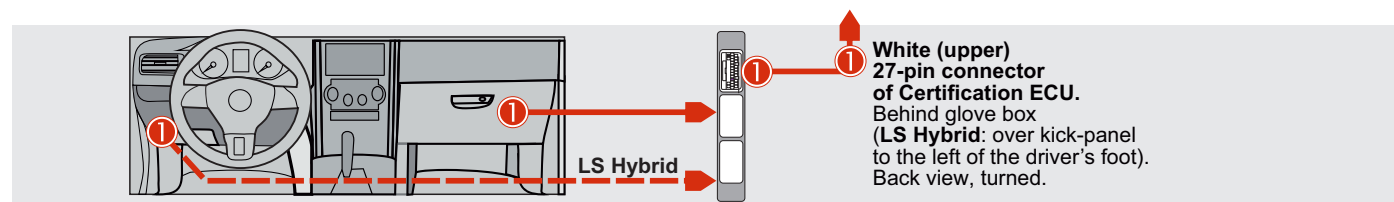
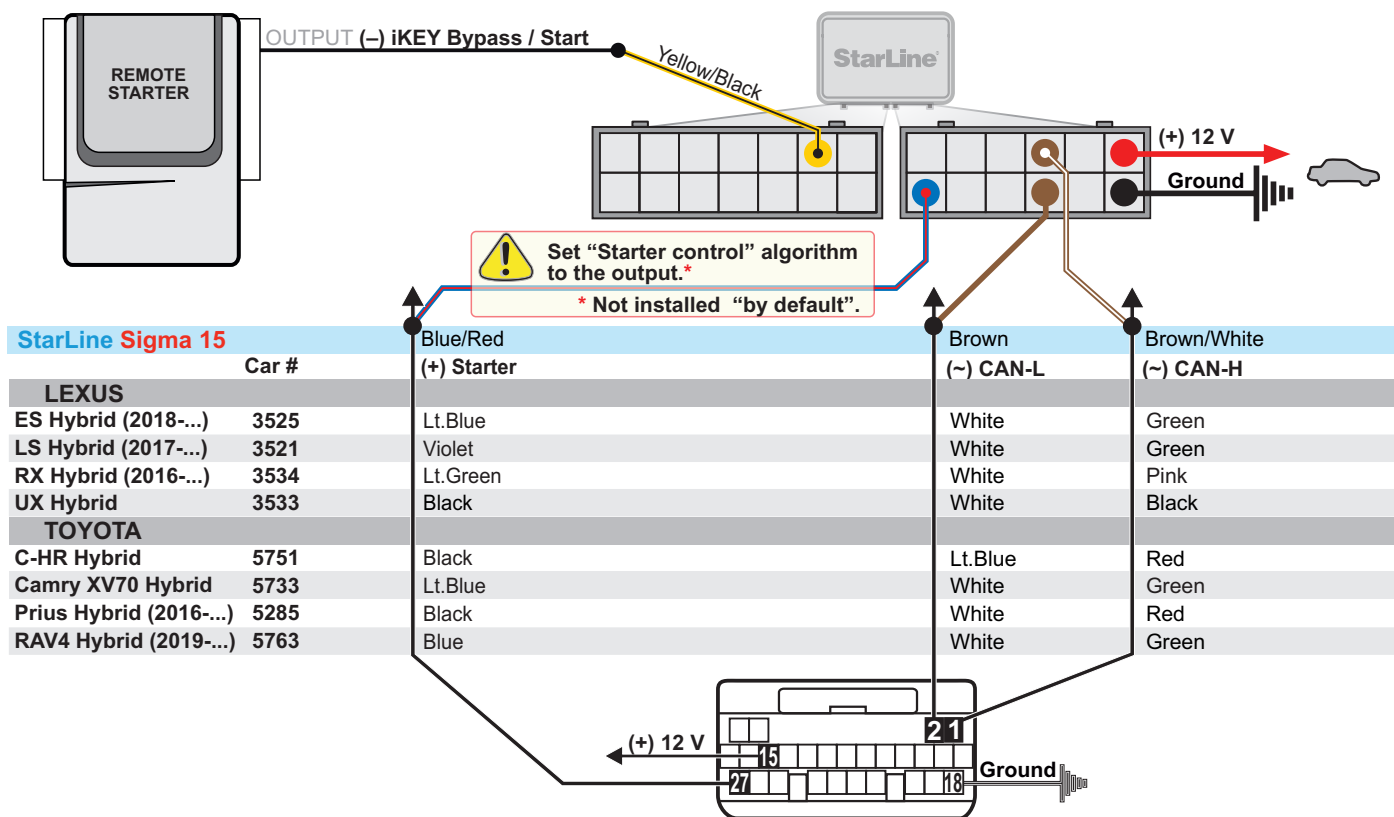
StarLine Sigma 15

	Car #	Orange/Violet (-) Steering lock	Brown (-) CAN-L	Brown/White (-) CAN-H
LEXUS				
LC	----	Red	White	Green

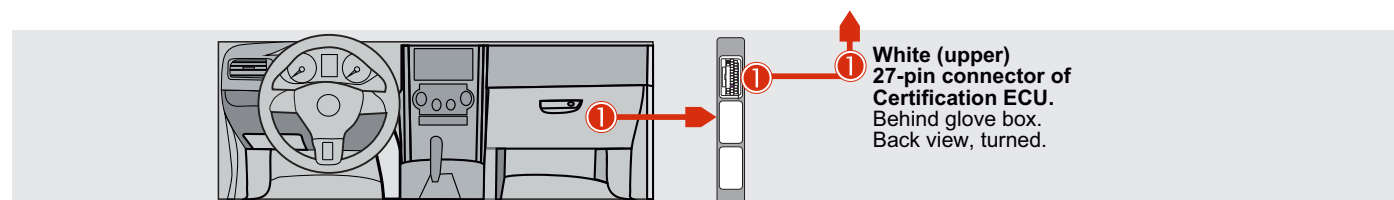
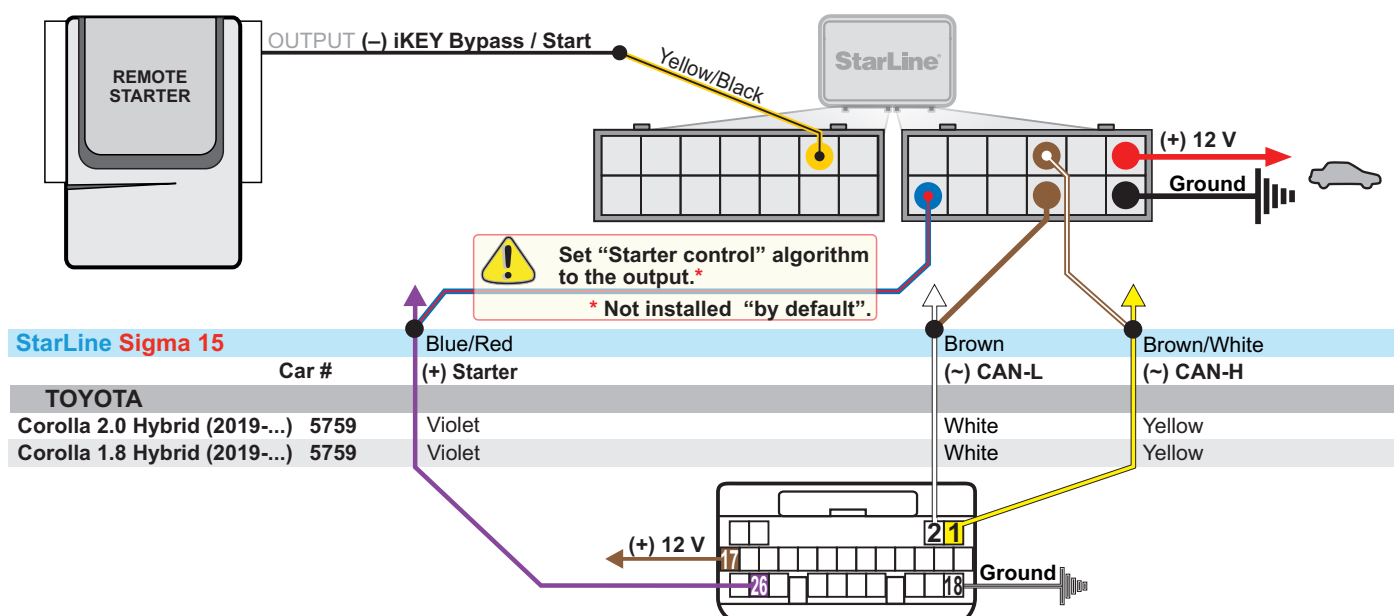


White (upper) 27-pin connector of Certification ECU.
Over kick-panel to the left of the driver's foot.
Back view, turned.

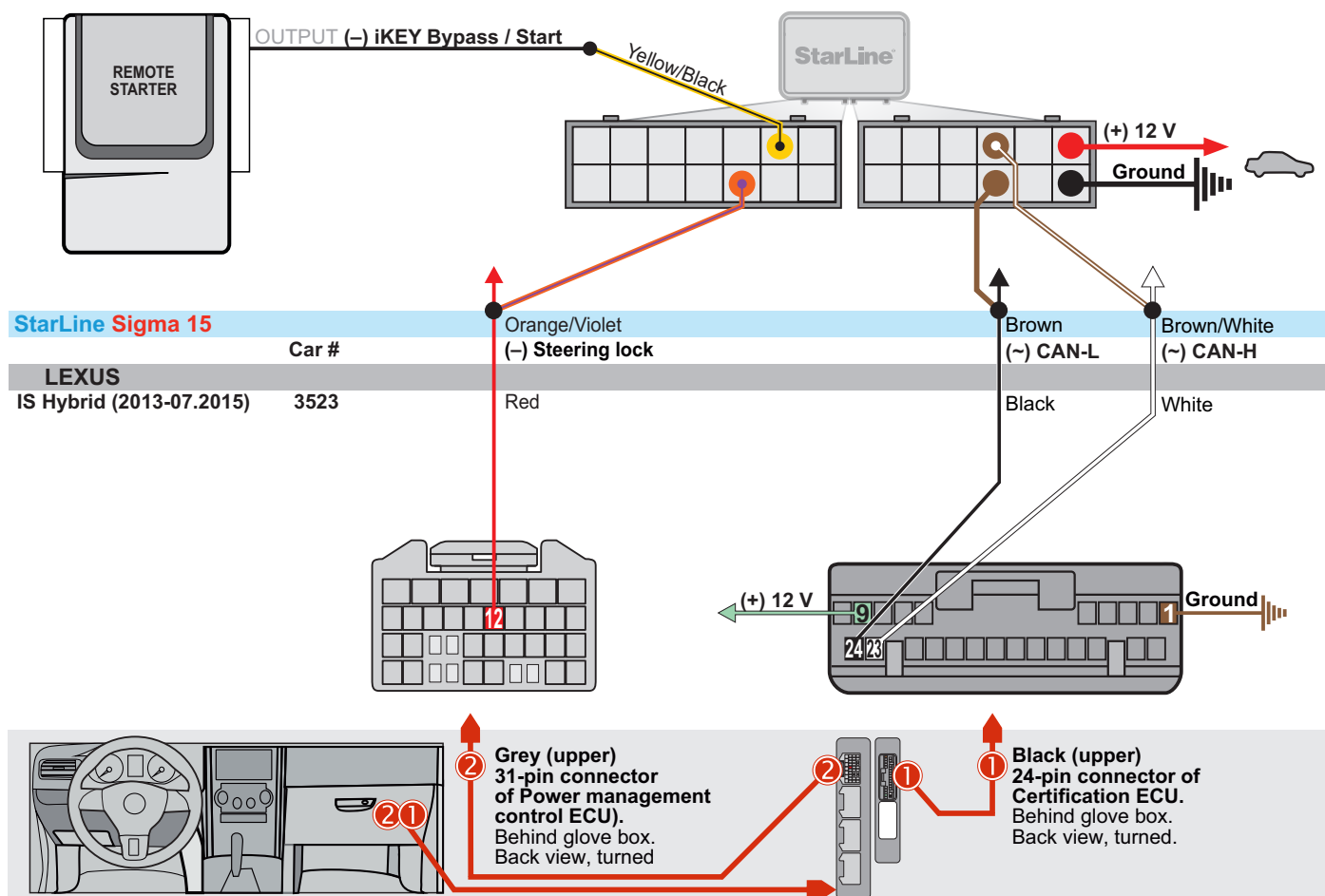
CONNECTION # 5



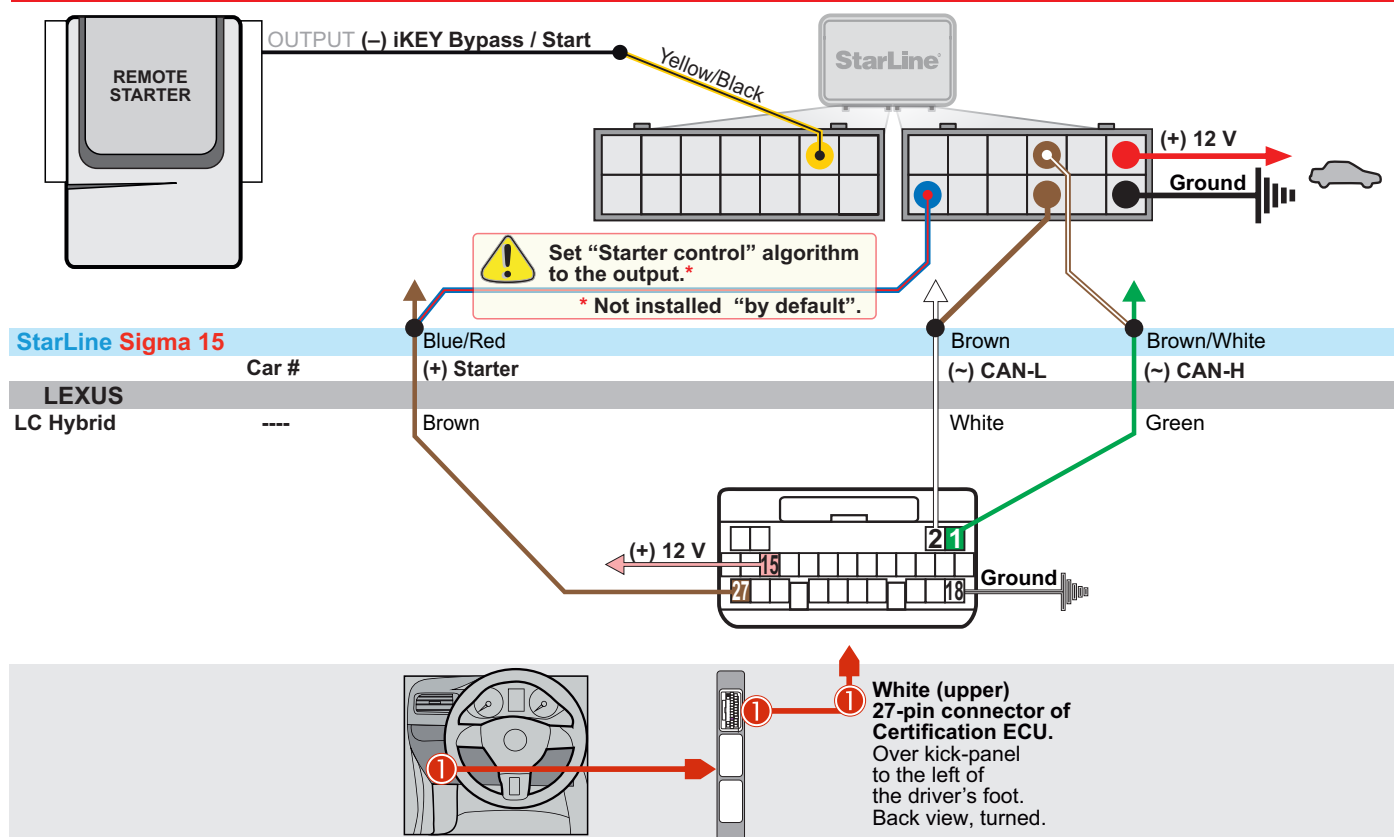
CONNECTION # 6



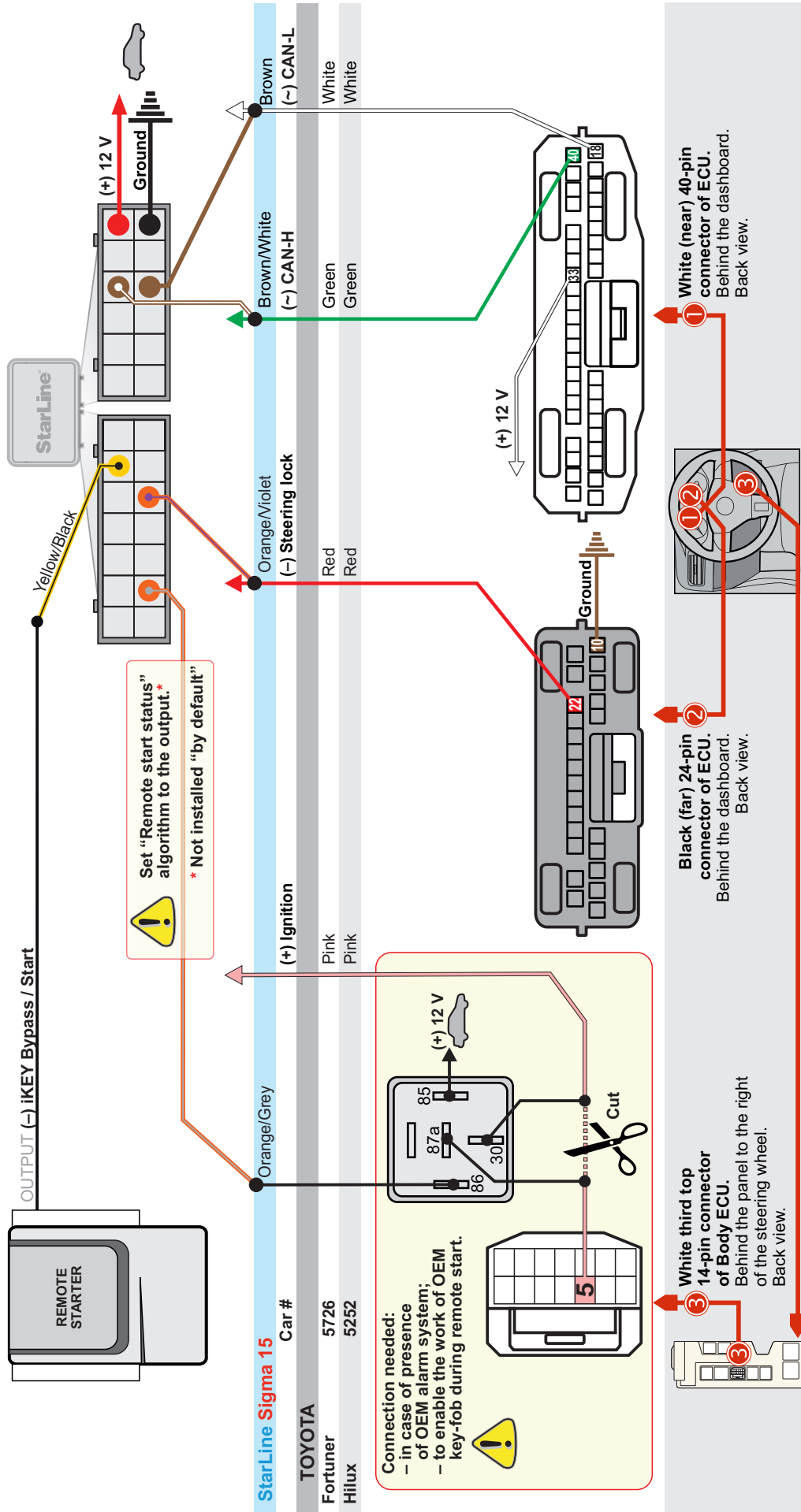
CONNECTION # 7



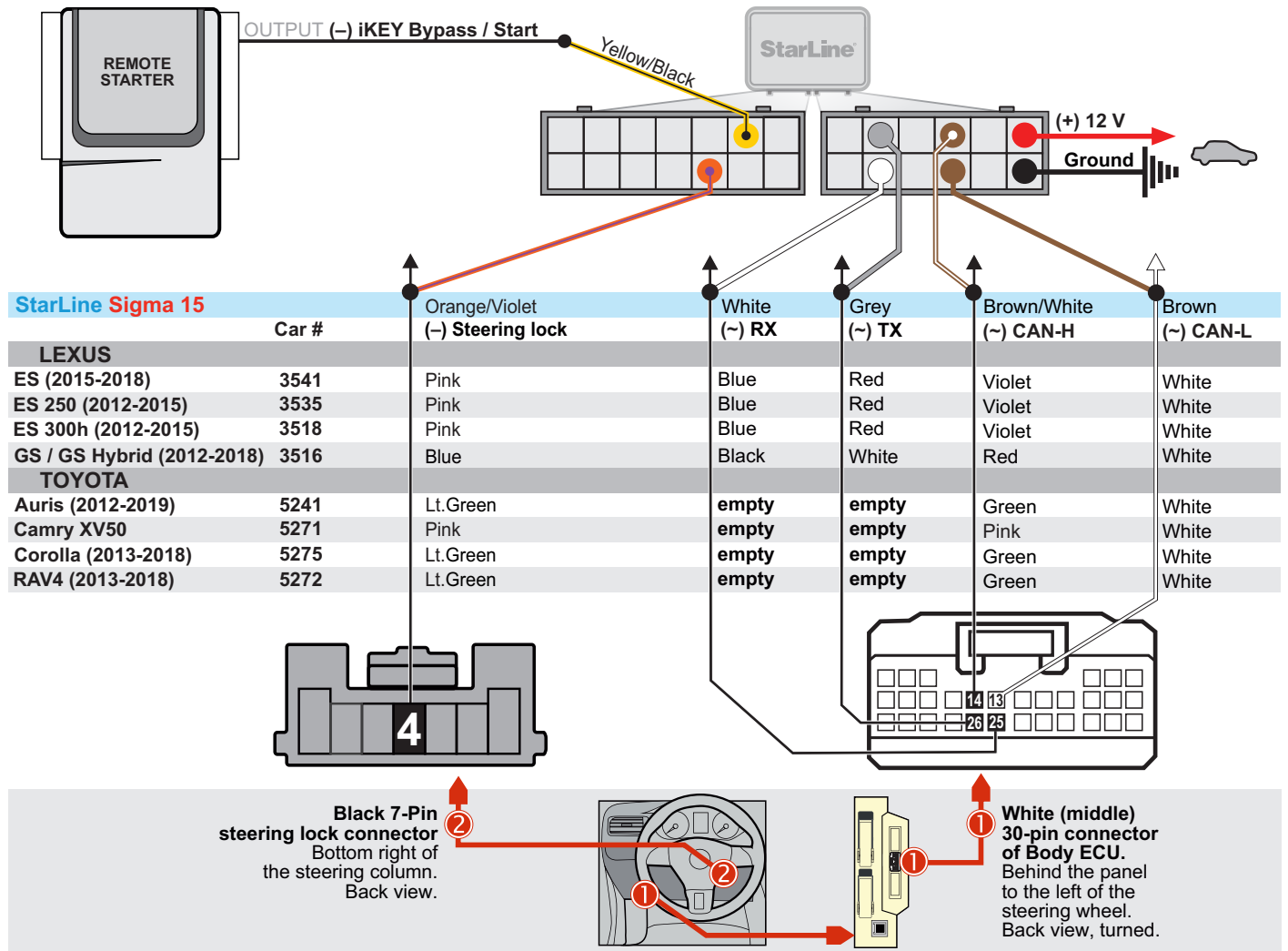
CONNECTION # 8



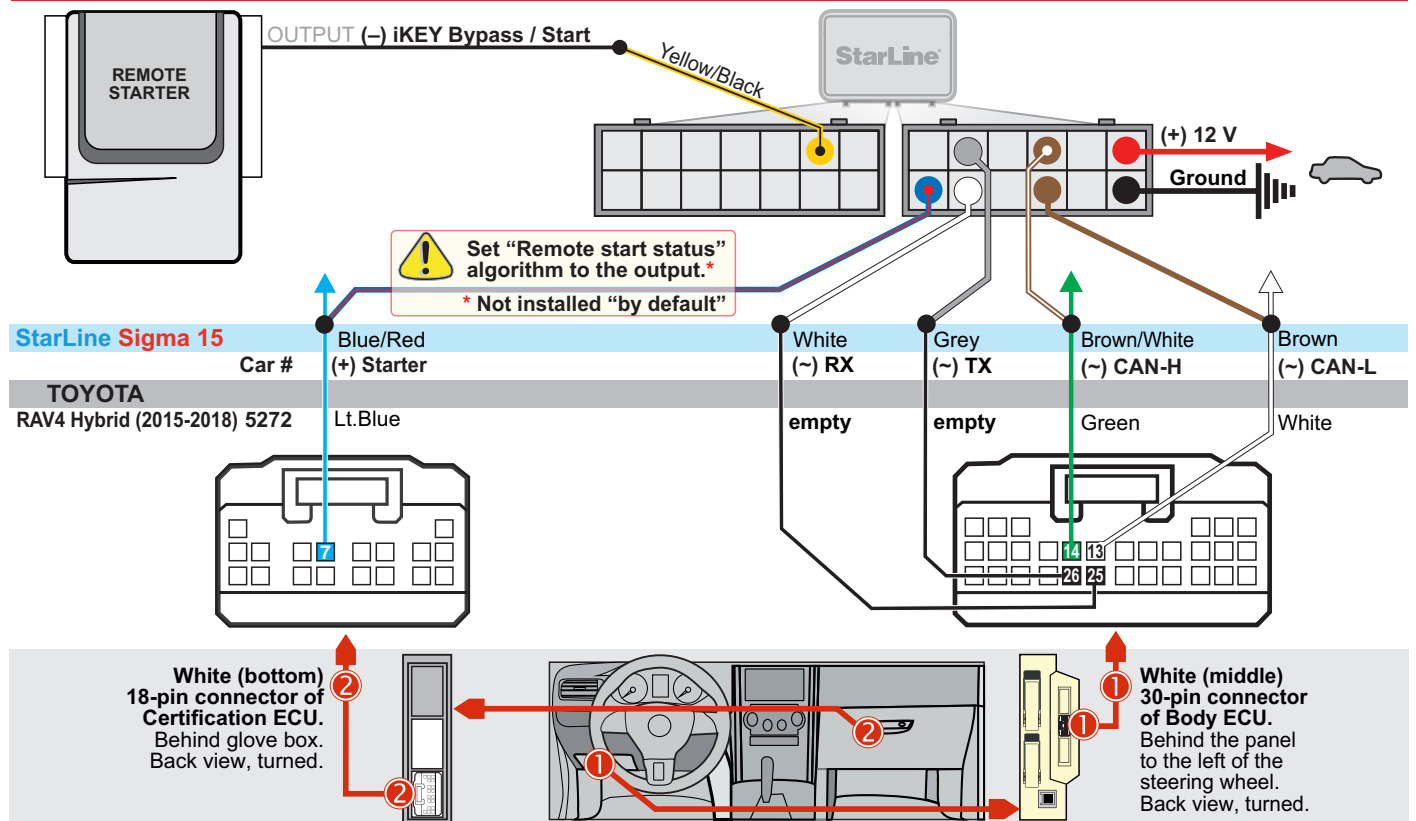
CONNECTION # 9



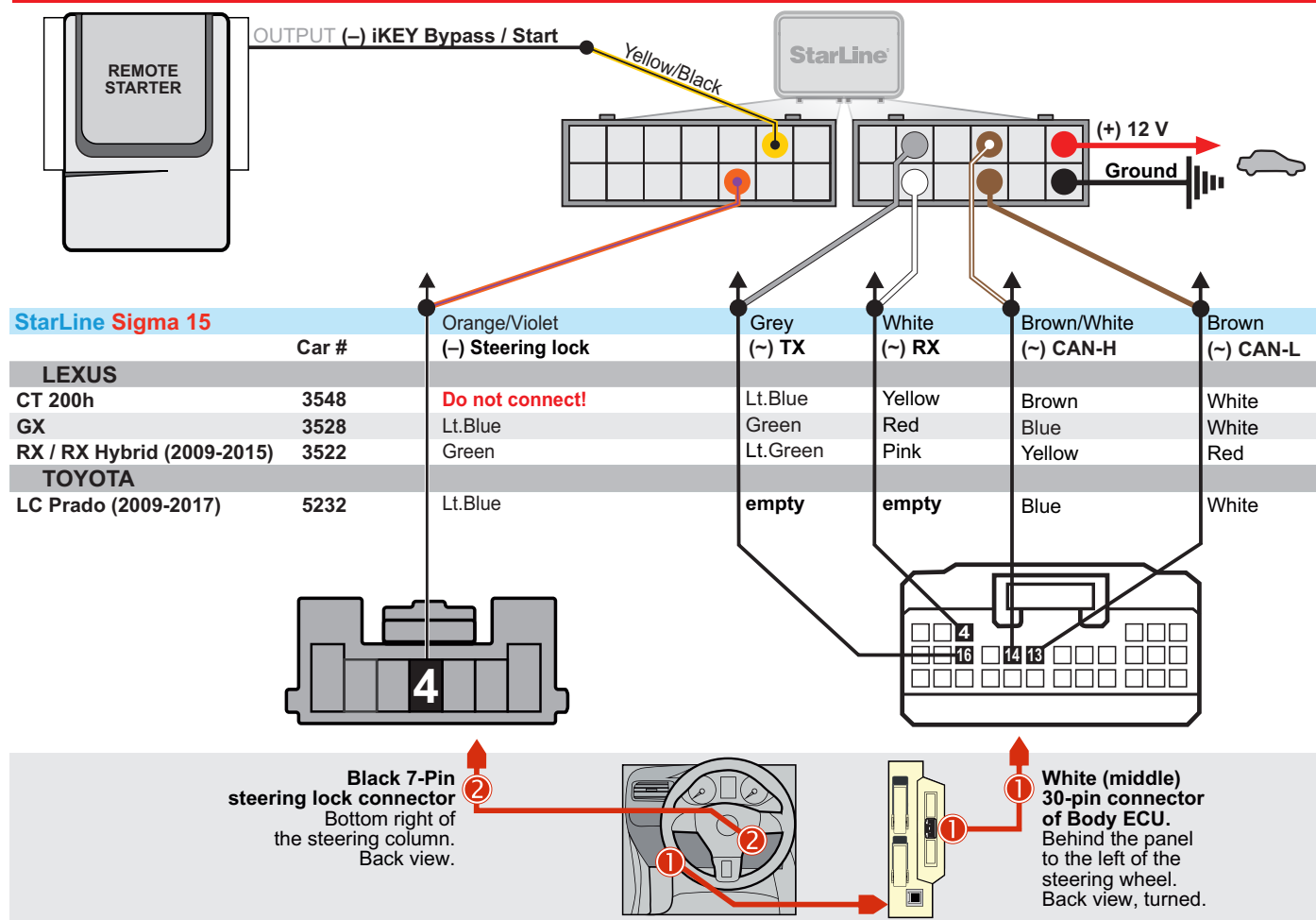
CONNECTION # 10



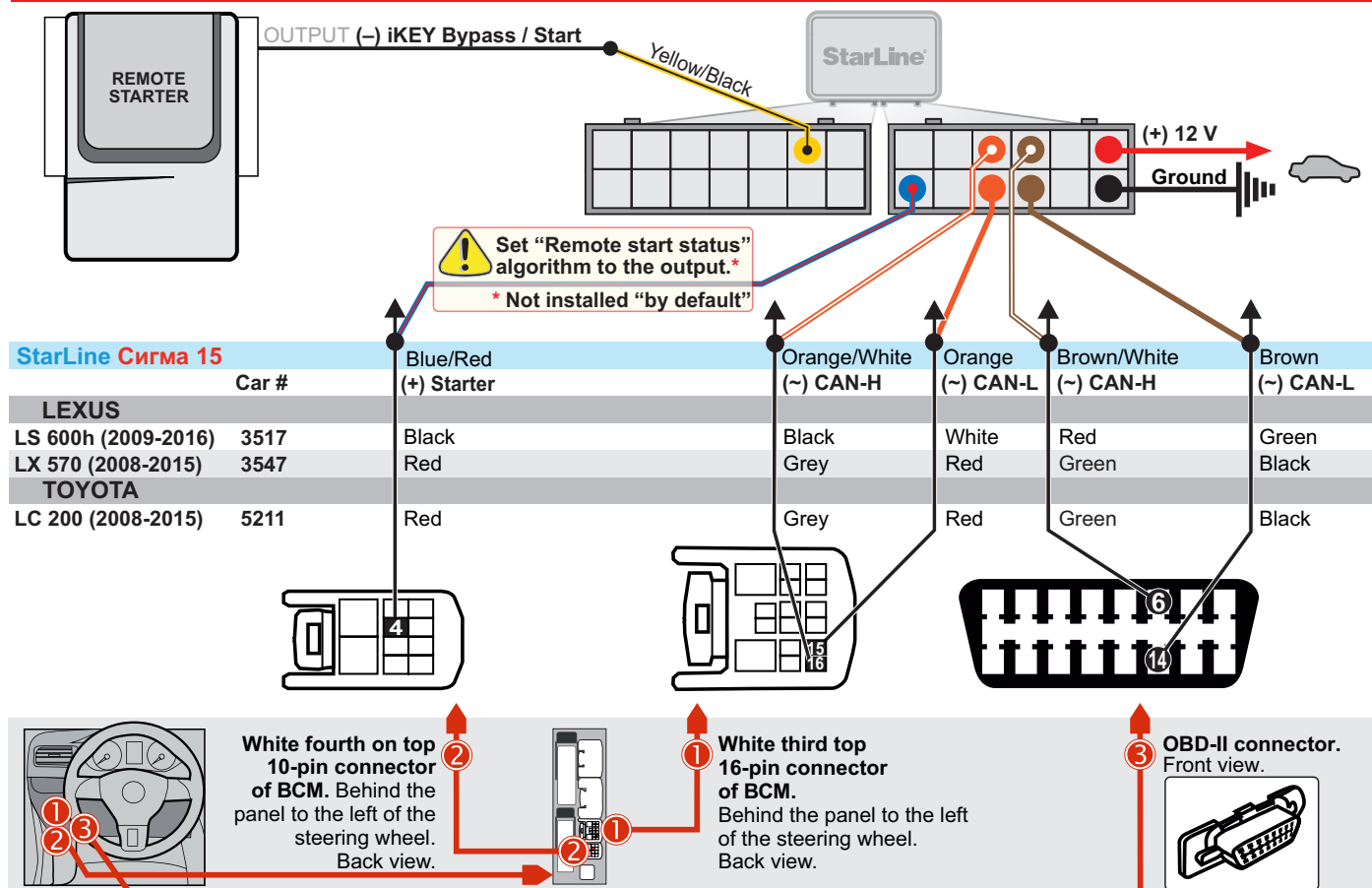
CONNECTION # 11



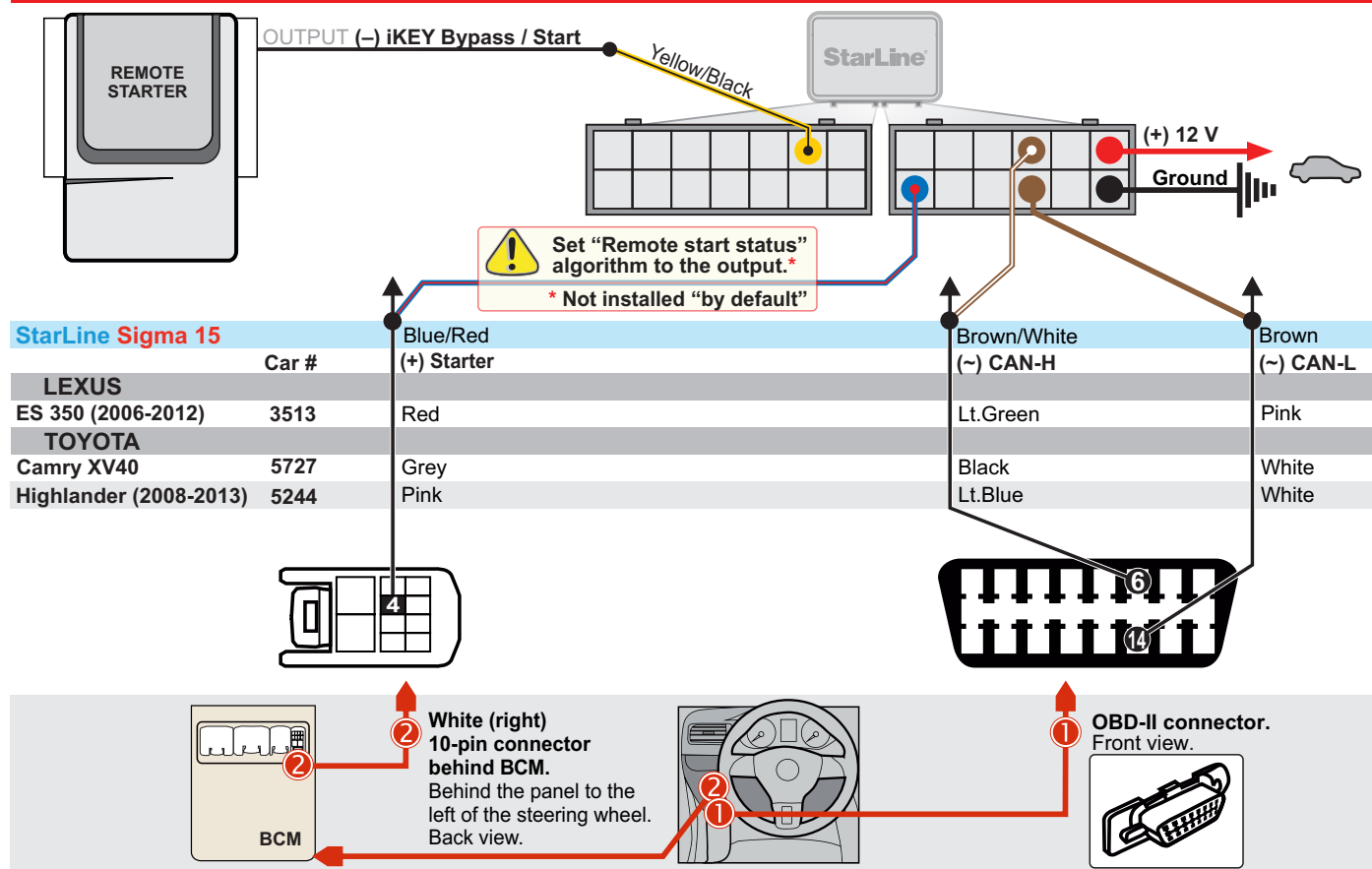
CONNECTION # 12



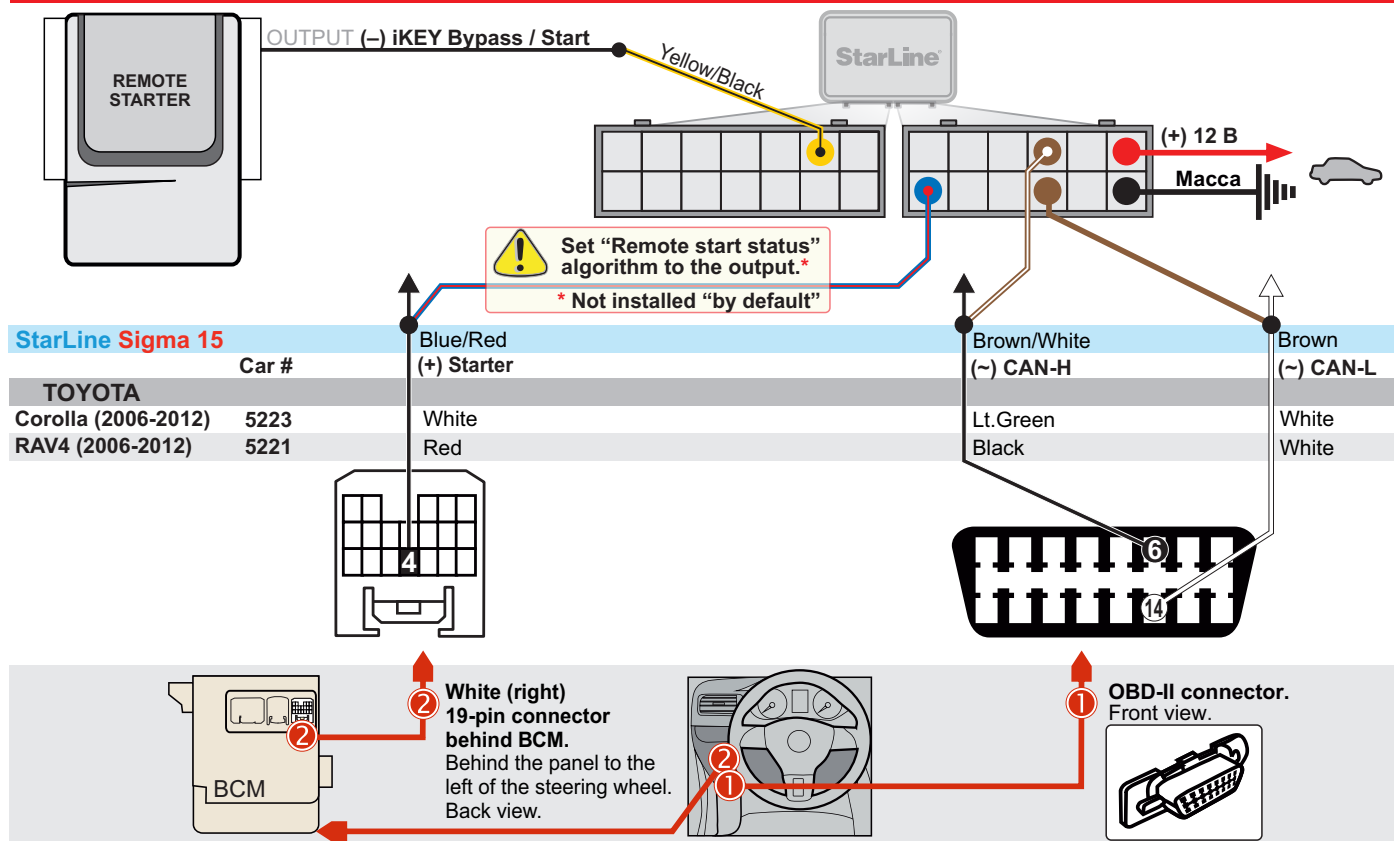
CONNECTION # 13



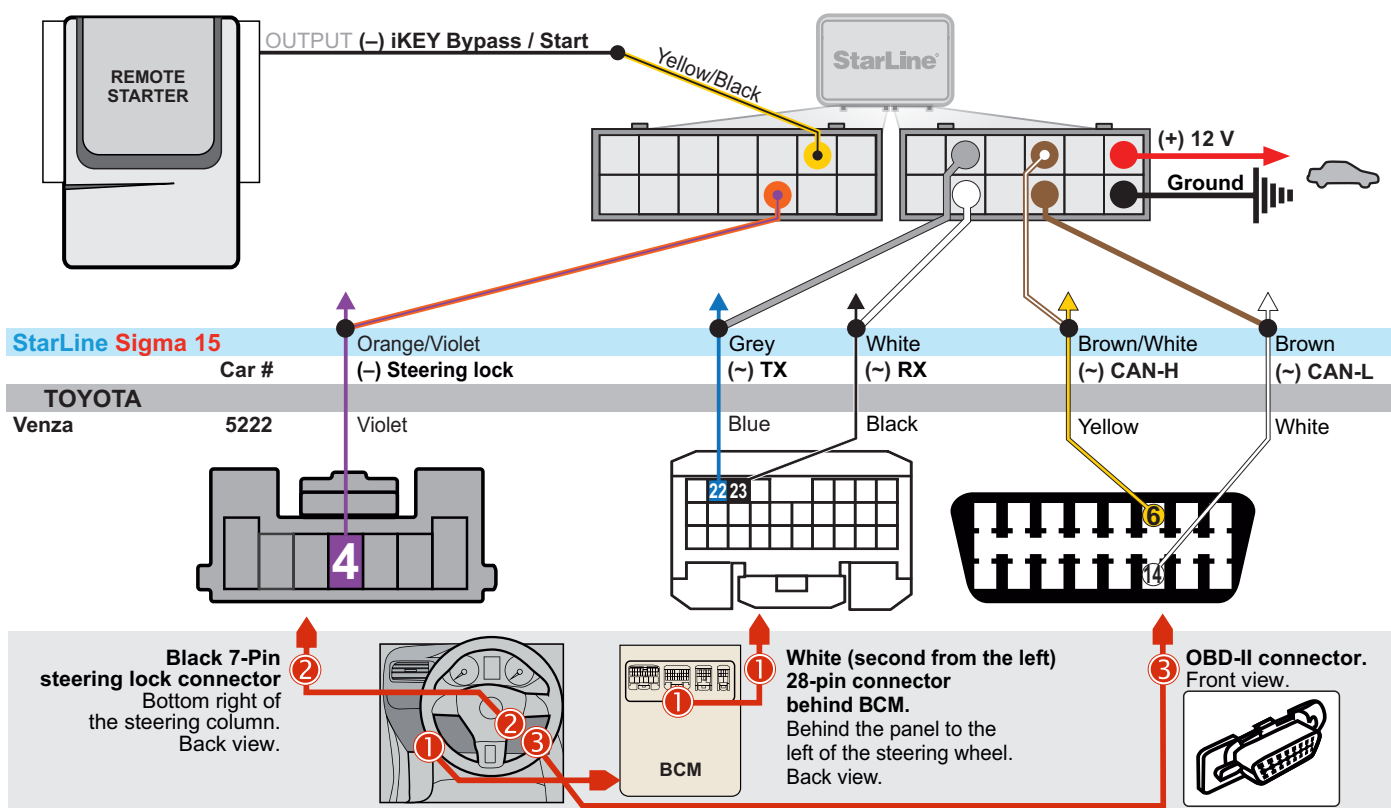
CONNECTION # 14



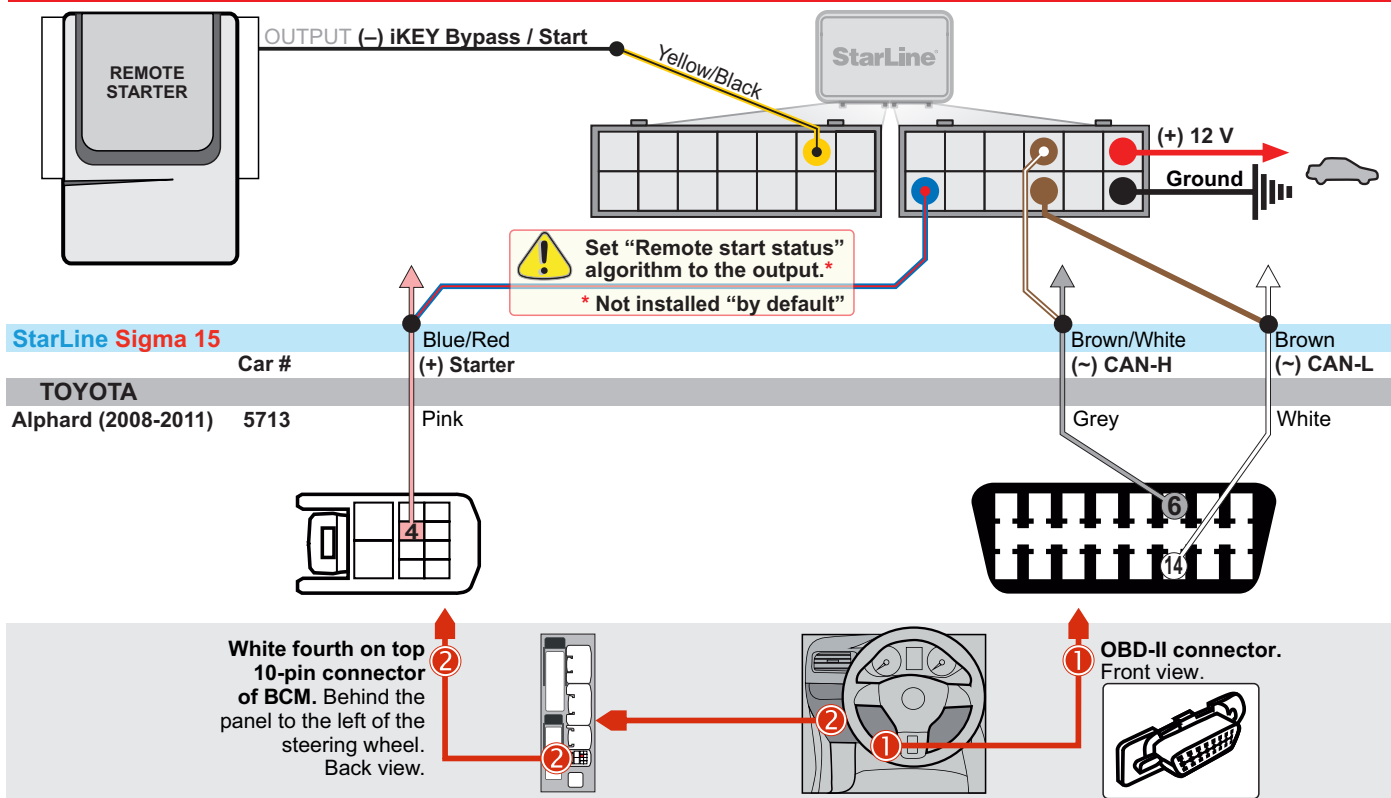
CONNECTION # 15



CONNECTION # 16



CONNECTION # 17

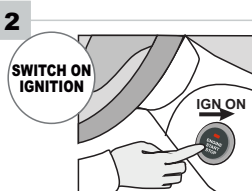


iKEY BYPASS LEARNING PROCEDURE



Make sure that **ignition is off**. Switch on power supply. **Press programming button** fourteen (14x) times.

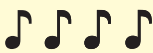
Attention! No sound (chirp) confirmation of pressures!

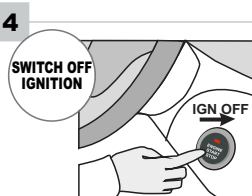


Switch on ignition within next 5 seconds.



2 fast sound signals will confirm **the end of learning procedure**.


 One can hear 4 short chirps in case of false learning.



Switch off ignition

StarLine Sigma 15  Sigma 15 is ready to work.

NOTES
