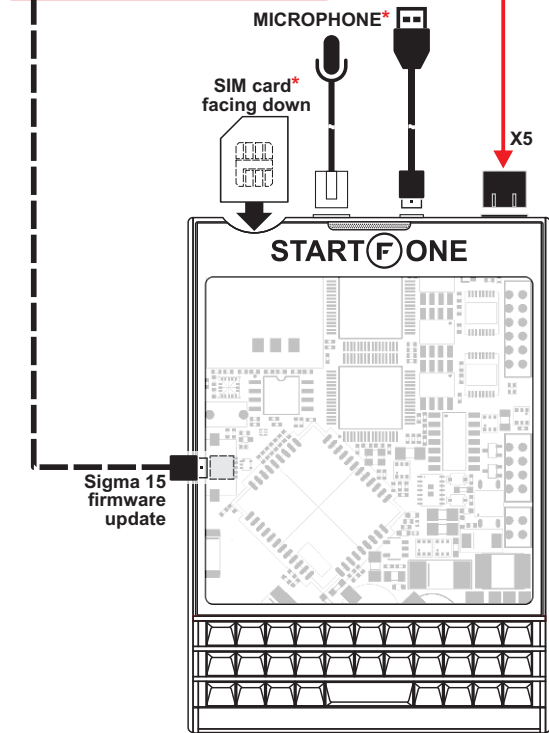


StartFone 2: basic wiring diagram

Before the installation:

- Download from can.starline.ru the last firmware version for your vehicle;
- Open the housing;
- Connect USB cable;
- Run **StarLine Master** programm;
- Update Sigma 15 firmware;
- Choose proper vehicle number.



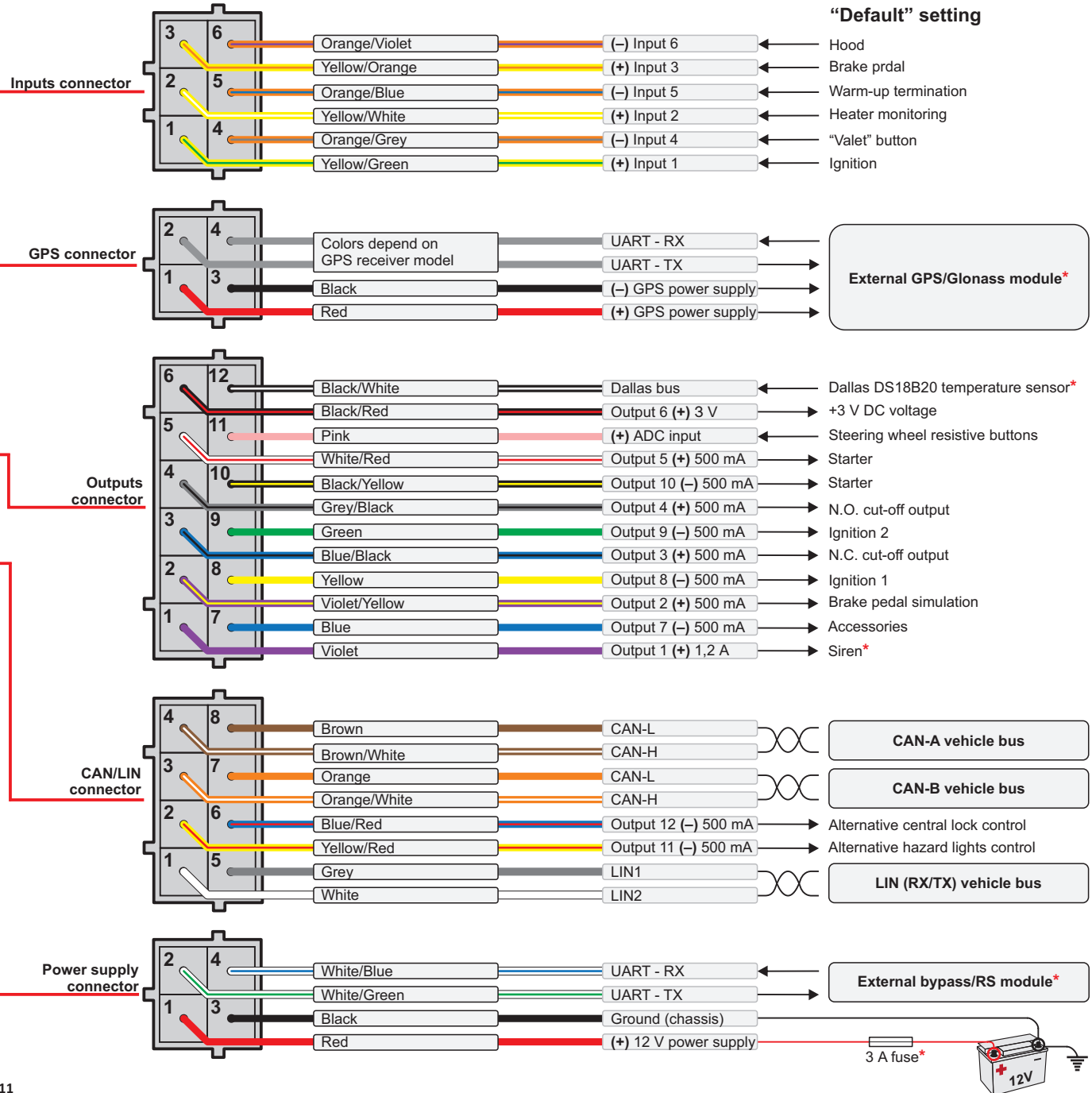
TECHNICAL SPECIFICATIONS

average power consumption: 17 mA
 permitted supply voltage: 9...30 V
 operating temperature: -40...+85°C
 dimensions: 75x57x15 mm

* Option (may be not included into delivery set)

ATTENTION!

- The summary current of positive outputs should not exceed 2 A
- The summary current of negative outputs should not exceed 2 A



Typical connections (by using of "default" outputs setting unless indicated otherwise)

